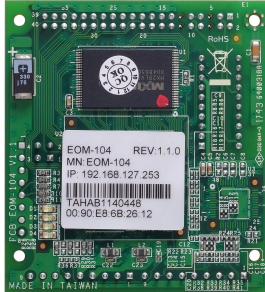


EOM-104 Series

4-port embedded managed Ethernet switch modules



Features and Benefits

- 10/100BaseT(X) and 100BaseFX Ethernet interfaces
- Turbo Ring and RSTP/STP for network redundancy
- SNMP and email alerts for event trapping and notifications
- Two-thirds the size of a business card
- Low power consumption
- -40 to 75°C operating temperature range

Certifications



Introduction

The EOM-104 Series is designed for device manufacturers who would like to embed Ethernet modules in their products to enhance performance and reliability. The EOM-104 Series provides an easy and cost-effective integrated solution for adding an Ethernet switch module to an existing product.

The modules support 10/100M Ethernet transmission and come with Turbo Ring's fast recovery time of under 20 ms. The EOM-104 Series provides a rich set of peripherals, such as Turbo Ring Enable and GPIO programming pins, and is an ideal solution for embedded Ethernet applications.

Specifications

Ethernet Interface

Standards	IEEE 802.3 for 10BaseT IEEE 802.3u for 100BaseT(X) and 100BaseFX IEEE 802.3x for flow control IEEE 802.1p for Class of Service IEEE 802.1D-2004 for Spanning Tree Protocol IEEE 802.1w for Rapid Spanning Tree Protocol
-----------	----------------------------------------------------------------------------------------------------------------------------------------------------------------------------------------------------------------------------------------

Ethernet Software Features

Protocols	BOOTP, DHCP Client, HTTP, RARP, RMON, SMTP, SNMPv1/v2c/v3, Syslog, Telnet, TFTP
MIB	Bridge MIB, Ethernet-like MIB, MIB-II, P-BRIDGE MIB, RMON MIB Groups 1, 2, 3, 9, RSTP MIB

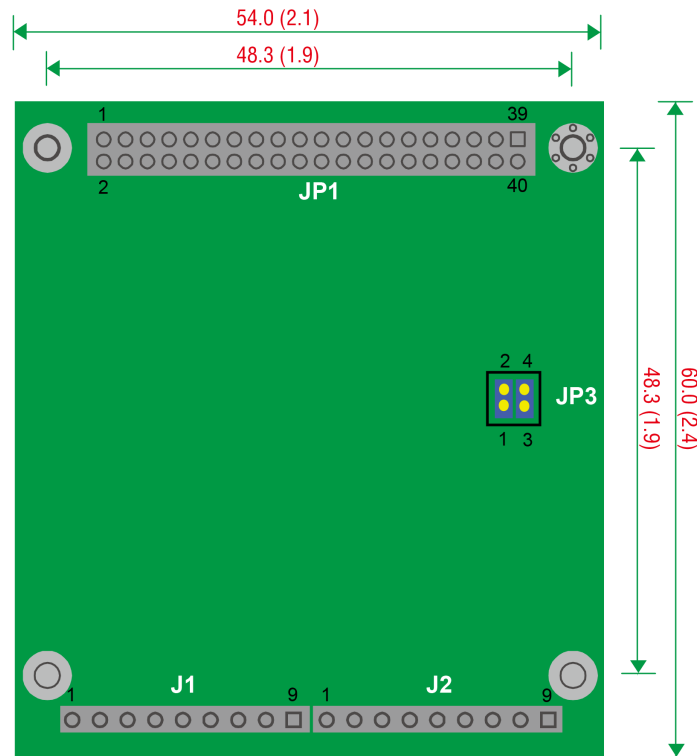
Switch Properties

MAC Table Size	1 K
Packet Buffer Size	512 kbits

Ethernet Interface	
10/100BaseT(X) Port	EOM-104: 4 EOM-104-FO: 2
100BaseFX Port	EOM-104-FO: 2 EOM-104-FO 20PCS: 2 EOM-104-FO Evaluation Kit: 2
Connector	1 connector with 2 x 20 pins, 2 connectors with 1 x 9 pins, and 1 connector with 2 x 2 pins
Serial Interface	
Console Port	RS-232 (TxD, RxD, DTR, DSR)
Ethernet Interface	
GPIO	4 x Programmable I/O pins
Power Parameters	
Input Current	EOM-104: 0.48 A @ 3.3 VDC EOM-104-FO: 1.1 A @ 3.3 VDC
Physical Characteristics	
Dimensions	54 x 60 x 8.25 mm (2.13 x 2.36 x 0.32 in)
Weight	21 g (0.046 lb)
Environmental Limits	
Operating Temperature	-40 to 75°C (-40 to 167°F)
Storage Temperature (package included)	-40 to 85°C (-40 to 185°F)
Ambient Relative Humidity	5 to 95% (non-condensing)
Standards and Certifications	
EMC	EN 55032/24
EMI	CISPR 32, FCC Part 15B Class A
Warranty	
Warranty Period	5 years
Details	See www.moxa.com/warranty
Package Contents	
Device	EOM-104: 1 x EOM-104 module EOM-104 20PCS: 20 x EOM-104 module EOM-104 Evaluation Kit: 1 x EOM-104 module with evaluation board EOM-104-FO: 1 x EOM-104-FO module EOM-104-FO 20PCS: 20 x EOM-104-FO module EOM-104-FO Evaluation Kit: 1 x EOM-104-FO module with evaluation board
Power Supply	EOM-104/104-FO Evaluation Kit: 1 x universal power adapter, 2 x power cord
Cable	1 x Null modem serial cable, 1 x Ethernet crossover cable (EOM-104/104-FO Evaluation Kit) 1 x accessory pack (EOM-104/104-FO, EOM-104/104-FO Evaluation Kit) 20 x accessory pack (EOM-104 20PCS, EM-104-FO 20PCS)
Documentation	1 x document and software CD 1 x warranty card

Dimensions

Unit: mm (inch)



Ordering Information

Model Name	10/100BaseT(X) Ports	100BaseFX Ports	20 pcs per package	Evaluation Kit	Operating Temp.
EOM-104	4	-	-	-	-40 to 75°C
EOM-104 20PCS	4	-	✓	-	-40 to 75°C
EOM-104 Evaluation Kit	4	-	-	1	-40 to 75°C
EOM-104-FO	2	2	-	-	-40 to 75°C
EOM-104-FO 20PCS	2	2	✓	-	-40 to 75°C
EOM-104-FO Evaluation Kit	2	2	-	1	-40 to 75°C

Accessories (sold separately)

Software

MXview-50	Industrial network management software with a license for 50 nodes (by IP address)
MXview-100	Industrial network management software with a license for 100 nodes (by IP address)
MXview-250	Industrial network management software with a license for 250 nodes (by IP address)
MXview-500	Industrial network management software with a license for 500 nodes (by IP address)
MXview-1000	Industrial network management software with a license for 1000 nodes (by IP address)
MXview-2000	Industrial network management software with a license for 2000 nodes (by IP address)
MXview Upgrade-50	License expansion of MXview industrial network management software by 50 nodes (by IP address)

© Moxa Inc. All rights reserved. Updated Aug 06, 2019.

This document and any portion thereof may not be reproduced or used in any manner whatsoever without the express written permission of Moxa Inc. Product specifications subject to change without notice. Visit our website for the most up-to-date product information.