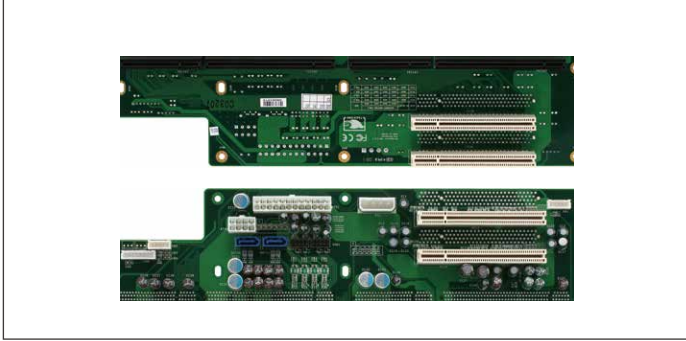


BP-206VH-P4

Rackmount, PICMG 1.3, 6-Slot Backplane, 4 PCI, Single Segment



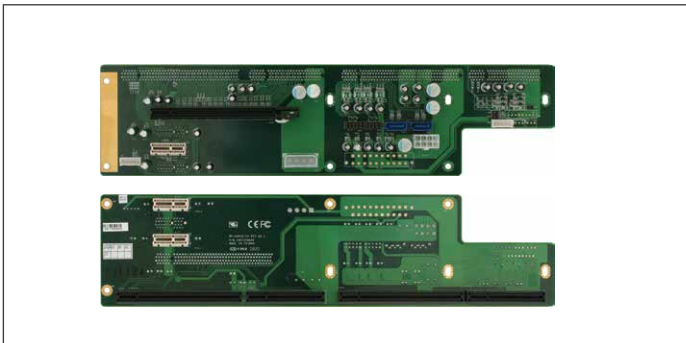
Master	PICMG 1.3
PICMG 1.3	1
PCI	4
System	Single
FAN Connector	2
ATX Power Connector	1
Dimension	12.9" x 3.5" (327mm x 88mm)

Ordering Information

- **TF-BP-206VH-P4-A10**
Rackmount, PICMG 1.3, 6-Slot Backplane, 4 PCI, Single Segment, Rev. A1.0

BP-206VH-E4

Rackmount, PICMG 1.3, 6-Slot Backplane, 1 PCI-E [x16], 3 PCI-E [x1], Single Segment



Master	PICMG 1.3
PICMG 1.3	1
PCI-E [x1]	3
PCI-E [x16]	1
System	Single
FAN Connector	2
ATX Power Connector	1
Dimension	12.9" x 3.5" (327mm x 88mm)

Ordering Information

- **TF-BP-206VH-E4-A10**
Rackmount, PICMG 1.3, 6-Slot Backplane, 1 PCI-E [x16], 3 PCI-E [x1], Single Segment, Rev. A1.0