

PICMG 1.3 Backplanes

BP-206SH-P3

Wallmount, PICMG 1.3, 6-Slot Backplane, 3 PCI, 1 PCI-E [x4], 1 PCI-E [x16], Single Segment



Master	PICMG 1.3
PICMG 1.3	1
PCI	3
PCI-E [x 4]	1
PCI-E [x16]	1
System	Single
Fan Connector	2
ATX Power Connector	1
Dimension	12.9" x 5.3" (327mm x 134mm)

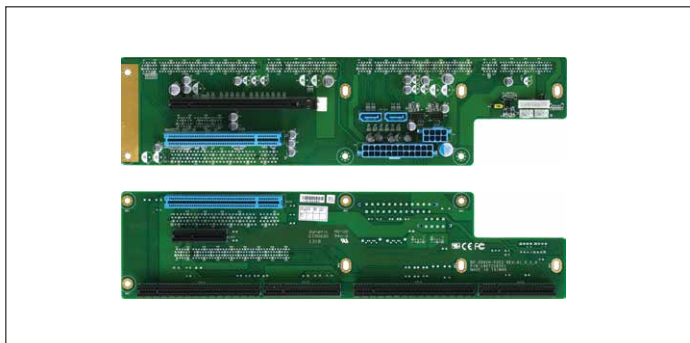
Ordering Information

- **TF-BP-206SH-P3-A10**

Wallmount, PICMG 1.3, 6-Slot Backplane, 3 PCI, 1 PCI-E [x4], 1 PCI-E [x16], Single Segment, Rev. A1.0

BP-206VH-P2E2

Rackmount, PICMG 1.3, 6-Slot Backplane, 2 PCI, 1 PCI-E [x4], 1 PCI-E [x16], Single Segment



Master	PICMG 1.3
PICMG 1.3	1
PCI	2
PCI-E [x4]	1
PCI-E [x16]	1
System	Single
Fan Connector	2
ATX Power Connector	1
Dimension	12.9" x 3.5" (327mm x 88mm)

Ordering Information

- **BP-206VH-P2E2**

Rackmount, PICMG 1.3, 6-Slot Backplane, 2 PCI, 1 PCI-E [x4], 1 PCI-E [x16], Single Segment, Rev. A1.0